

IEEE 802.11a+g Wireless Access Point HR054ag

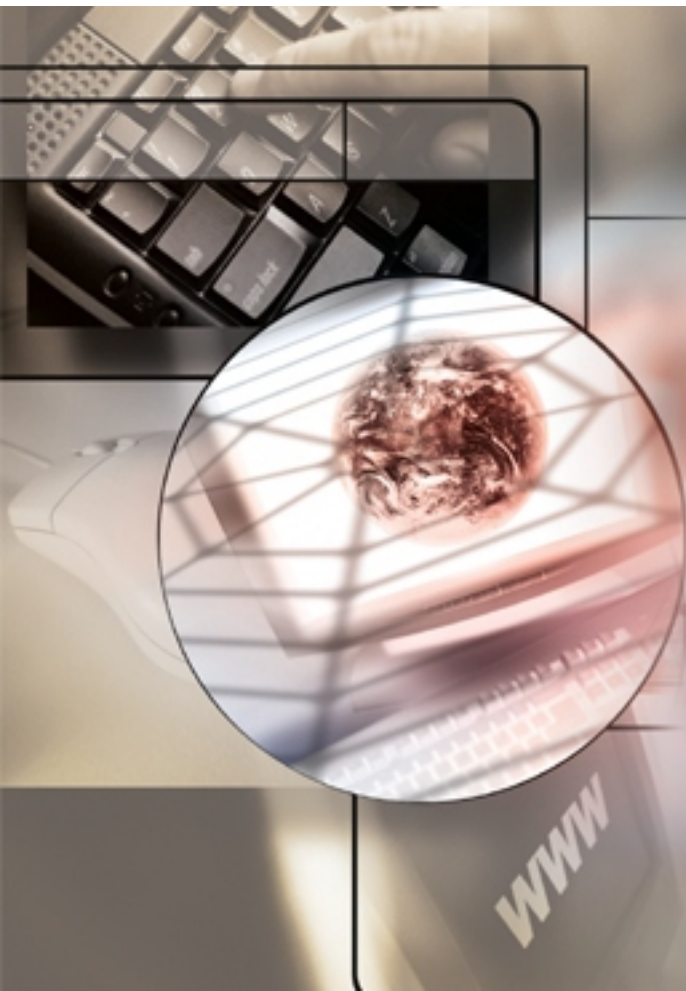
The IEEE802.11a+b+g Wireless Access Point (HR054ag) operates simultaneously in both the 2.4GHz and 5GHz band, which support IEEE802.11b and the latest, faster 802.11a and 802.11g wireless standards. For offices, schools or public hotspots that already equipped with 802.11b devices, Unex HR054ag is an idea solution to let more users to access data, connect to the Internet or communicate with one another.

Unex HR054ag offers transfer rates up to 54Mbps in both 2.4GHz and 5GHz bands, which provides up to five times the throughput of previous 802.11b wireless devices. Users can work faster, more efficiently or watch online video smoothly. With the support of the (802.11a) 5GHz band, user can transfer data quickly without the interference produced by other devices operating in the 2.4GHz frequency.

Unex HR054ag can act as a wireless bridge and is an ideal way to extend the reach and number of computers connected to your wireless network. In repeating mode, the HR054ag repeats the wireless signal of access points and wireless routers to extend the range of your wireless network.

Features:

- High performance 11 Mbps (802.11b) or 54Mbps (802.11a/g) data rate | Support WDS (Wireless Bridge) mode
- Repeater Mode support (Wireless Repeater)
- Multiple security measures: SSID hiding, Access Control List, WEP based encryption (64, 128, 152 bits), enhanced Security with 802.1x using a primary and a backup Radius Server with/without dynamic WEP keys, WPA-PSK, and WPA.
- Support WPA with PSK/TKIP/AES
- Support Super A/G mode (Atheros Proprietary)
- Support adjustable output power
- IEEE 802.3af (PoE) compliant



HR054ag

IEEE 802.11a+g Wireless Access Point HR054ag

Specifications:

Standard conformance	IEEE 802.11b, 802.11g, 802.11a, IEEE 802.1x, IEEE 802.1d, IEEE 802.3u
Frequency Range	<ul style="list-style-type: none"> ■ 802.11a: 4.9GHz ~ 5.925 GHz ■ 802.11b/g: 2.412GHz ~ 2.484 GHz
Key Components	<ul style="list-style-type: none"> ■ CPU + MAC/BB: Atheros AR5312 ■ Radio: Atheros AR5112, AR2112
OS Platform	Linux 2.4.18
Modulation Technique	<ul style="list-style-type: none"> ■ 802.11b: CCK, DQPSK, DBPSK ■ 802.11g: OFDM ■ 802.11a: OFDM
Data rate	<ul style="list-style-type: none"> ■ 802.11b/g: 11, 5.5, 2, 1 Mbps, auto-fallback, up to 54 Mbps ■ 802.11g (Super mode): up to 108 Mbps ■ 802.11a (Normal mode): 54, 48, 36, 24, 18, 12, 9, 6Mbps, auto-fallback ■ 802.11a (Turbo mode): 108,96,72,48,36,24,18,12 Mbps, auto-fallback
Operating Channels	<ul style="list-style-type: none"> ■ 802.11b/g: <ul style="list-style-type: none"> * FCC: 11 (1~11) * Europe (ETSI): 13 (1~13) * Japan: 13 (1~13) ■ 802.11a: <ul style="list-style-type: none"> * FCC: 12 * Japan: 4
Network architecture types	<ul style="list-style-type: none"> ■ Infrastructure mode ■ Bridge mode (WDS) ■ Repeater mode
Hardware & Antenna	<ul style="list-style-type: none"> ■ 1 x RJ-45 10/100Mbps port with PoE support ■ 1 x reset button ■ 2 x external antenna ■ 4 x LED (1 x Power, 1 x LAN, 1 x 11a, 1 x 11g)
Security	<ul style="list-style-type: none"> ■ 64-bit, 128-bit, 152-bit WEP Encryption ■ EAP & 802.1x ■ Support primary & secondary RADIUS server ■ WPA and WPA-PSK
Management	<ul style="list-style-type: none"> ■ Web-based management ■ UPnP ■ Telnet ■ Upload & download text-based configuration file via HTTP browser ■ Firmware upgrade via HTTP browser ■ Syslog ■ SNMP v1/v2, Ethernet, MIB II, 802.11 MIB
IP Address Assignment	<ul style="list-style-type: none"> ■ DHCP Client ■ Static IP Address
Dimension	170.0(L) x 146.3(W) x 36.5(H) mm
External Power Adapter	DC 5V/2A input
Storage Temperature Range	-20 °C - 65 °C
Operating Temperature Range	0 °C - 40 °C
EMC Certification	CE, FCC Part 15, TELEC